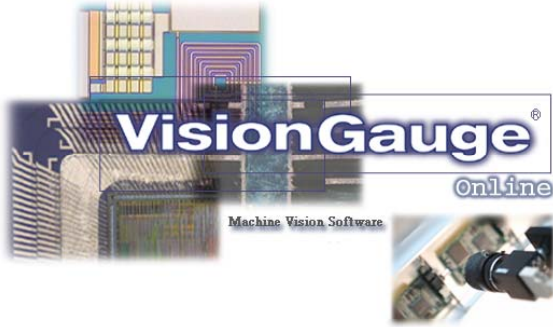


# SmartCapture™ Tool



VISIONx INC.

www.visionxinc.com

## Powerful & Easy-To-Use

VisionGauge® OnLine's SmartCapture™ tool waits for the part to be in position in front of the camera before carrying out an image capture operation.

To use VisionGauge® OnLine's SmartCapture™ tool, you setup Regions of Interest (ROIs) that must meet certain criteria that indicate the presence of a part. There is no limit on the number of ROIs that you can set. ROIs can be of any size, at any position in the image and can even overlap one another. VisionGauge® OnLine's SmartCapture™ tool continuously monitors the live video feed, tests the ROIs, and waits for the part to be in position before firing the Capture tool. VisionGauge® OnLine's SmartCapture™ tool is very intuitive and has different display options that provide useful and easy-to-understand visual feedback.

VisionGauge® OnLine's SmartCapture™ tool is very fast and is able to carry out its calculations at full frame rate. And if you're using an interlaced (i.e. standard video) camera, the SmartCapture™ tool can internally correct the video feed's interlace offset error.

The SmartCapture™ tool gives VisionGauge® OnLine the ability to self-trigger and is an easy way to interface VisionGauge® OnLine to various types of production and materials handling equipment.

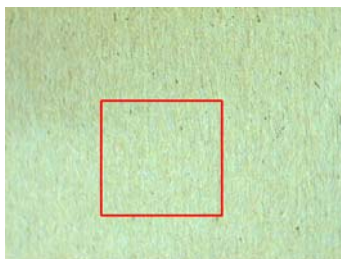


Image 1

There is no part  
in the field-of-view

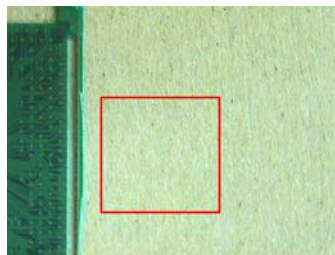


Image 2

The part is starting to move  
into the field-of-view

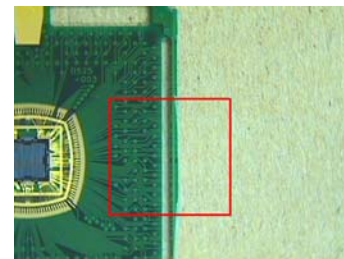


Image 3

The part is continuing to move forward

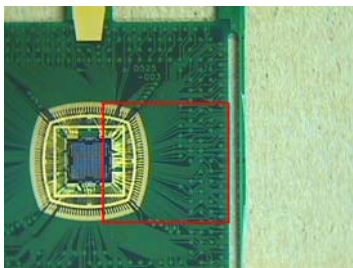


Image 4

The part is almost in position...

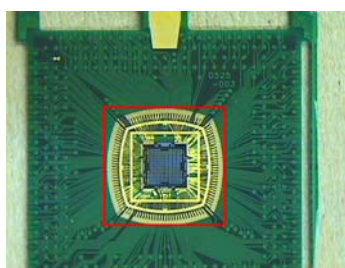


Image 5

The part is in position.  
It's time to capture the image!

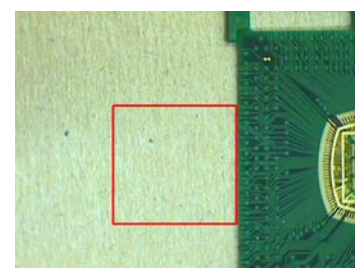


Image 6

Wait for the next part...