

“Perfect Focus” Tool (Focus-Based Image Blending)

VISION_x INC.

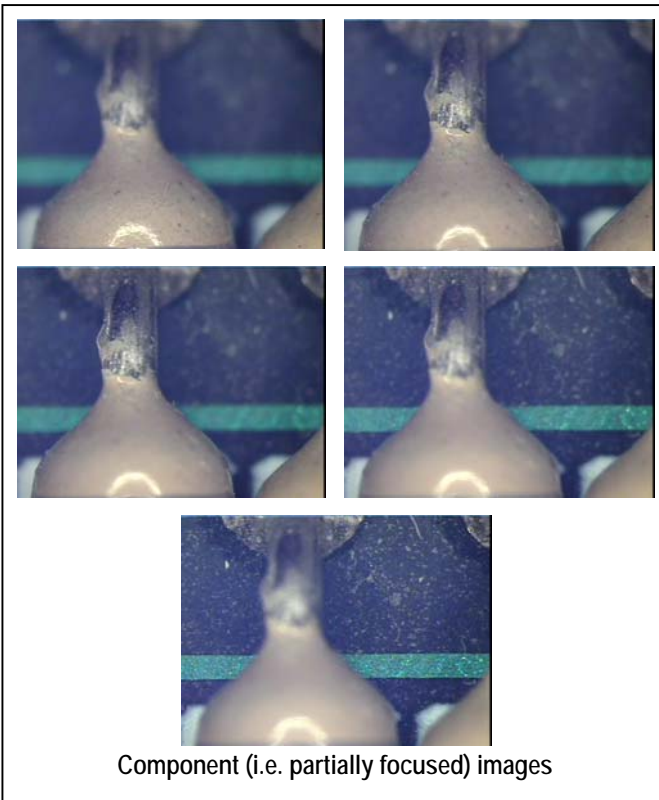
www.visionxinc.com

Powerful & Easy To Use

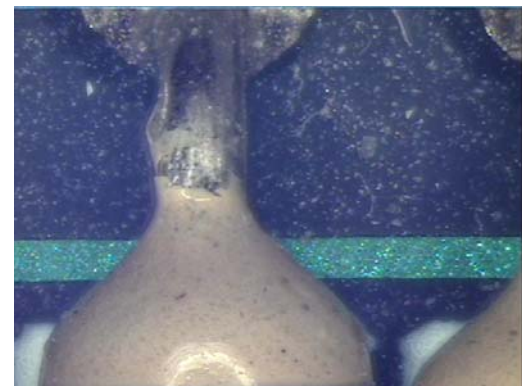
You can use VisionGauge's[®] “Perfect Focus” tool to combine two or more partially focused images into one fully-focused image! This is extremely useful in applications where your instrument's optical depth-of-field is less than the height of the features and topography on the sample. The “Perfect Focus” tool is fully automatic and extremely simple to use. It works on color as well as grayscale images and there is no limit on the number of component images that you can use. With this tool, you can choose from four different image blending algorithms:

- ▶ Best focus
- ▶ Weighted focus
- ▶ Power-weighted focus
- ▶ Adaptive focus (i.e. neighborhood-weighted best focus)

Example



Here is an example where five partially-focused component images of a resistor over a PCB are combined into one image that is perfectly in focus throughout.



Resulting (fully focused) image)

Notice how some features that are only visible in one of the component images and “blurred out” in the others appear clearly and with perfect definition in the resulting fully focused image.