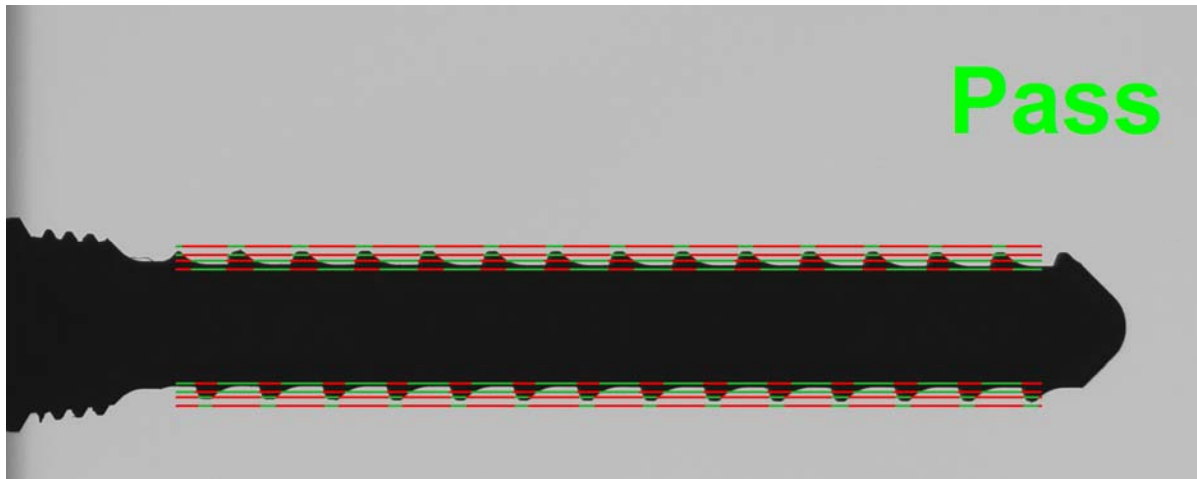


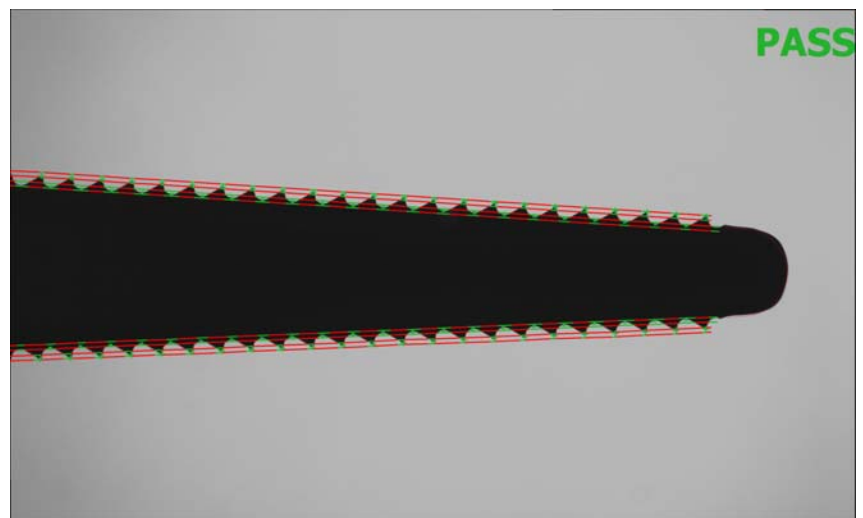
*The Fastest, Easiest, Most Accurate Way to Compare a Part to a CAD File™*

### POWERFUL **NEW** "TOOTH CHECKER™" TOOL! (Patent Pending)

We're happy to introduce VisionGauge®'s Patent Pending "Tooth Checker™" tool specially adapted to check parts with teeth. This innovative new tool automatically locates, to very high accuracy, the crests and / or roots of the teeth and determines if they are within their tolerance band. It can also determine all other part characteristics, such as tooth pitch, thread depth, major & minor diameters, etc...



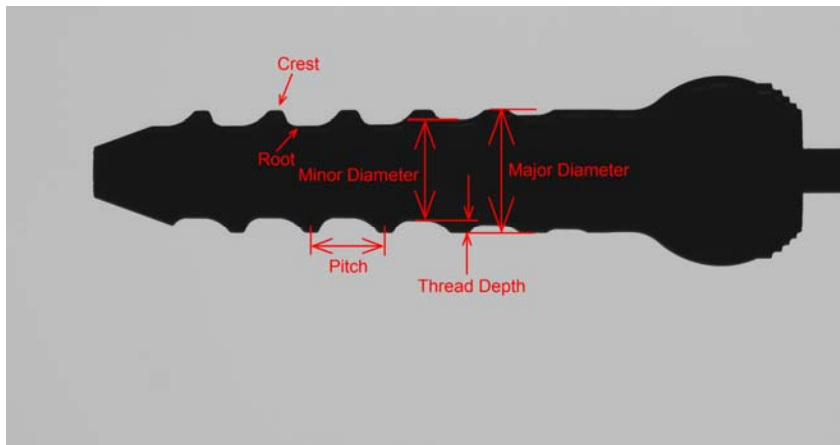
- Fully automated
- Completely independent of part orientation & clocking
- with a rotary stage the crest and root points can be used to calculate part runout
- Can also be applied to parts that are larger than the field-of-view
- The tool is usable in both manual and fully-automated modes (i.e. within an automated program)
- The tool produces a PASS / FAIL result (which can be exported and used in all of the same ways as the current PASS / FAIL results) and also shows where the part passes and where it fails
- Supports linearly variable tolerances, plus/minus tolerances, plus/plus tolerances, minus/minus tolerances, etc...
- Smart "Adaptive Thresholding" automatically disregards point imperfections



The Tooth Checker tool can check that either crests, roots, or both, are in tolerance

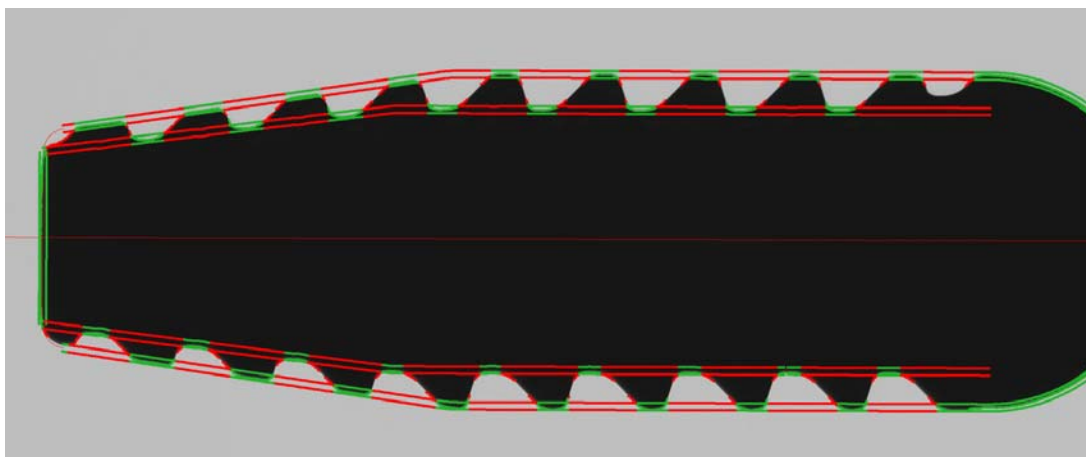
Perfect for quickly and accurately checking:

- Bone screws
- Medical rasps
- Gears
- Fluted instruments
- Threads & fittings
- Etc...



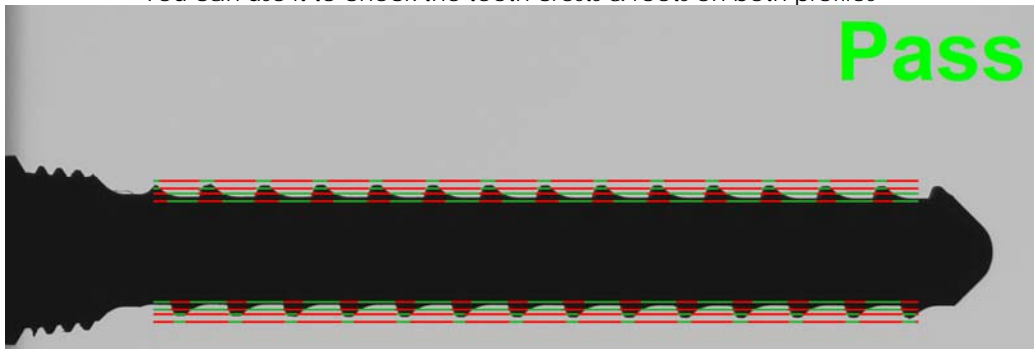
Quick & Easy to Set Up!

Using the crest & root points that the Tooth Checker tool has found, it can then automatically determine all other part characteristics

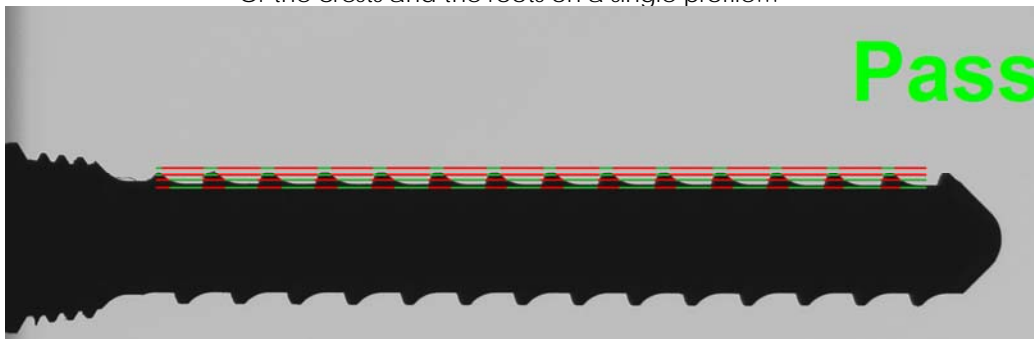


There are no limitations as to part geometry!

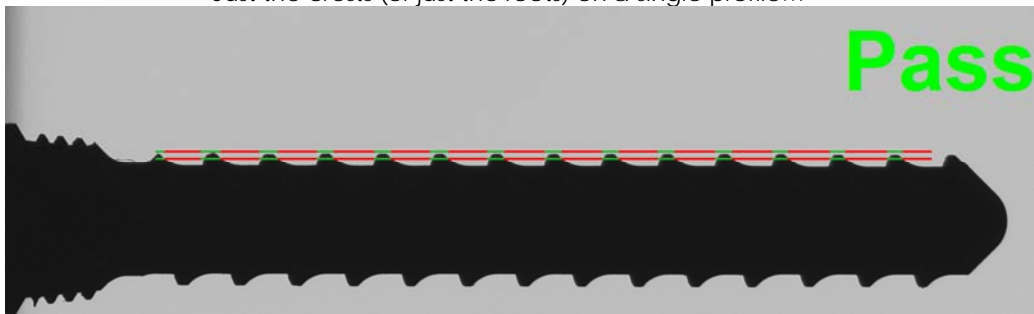
The New Tooth Checker Tool is extremely flexible!  
You can use it to check the teeth crests & roots on both profiles



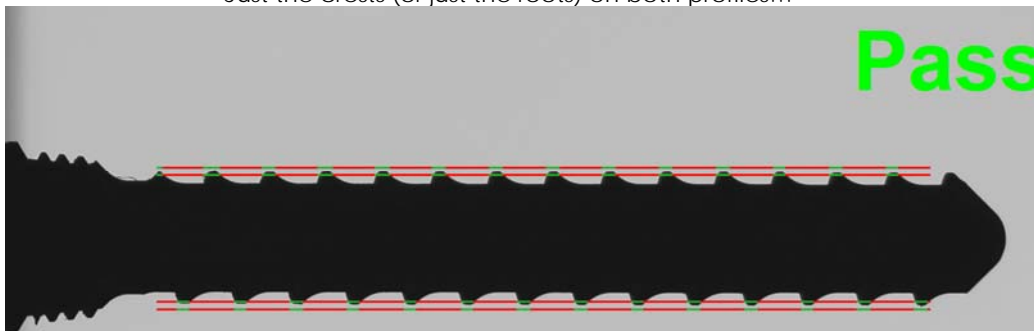
Or the crests and the roots on a single profile...



Just the crests (or just the roots) on a single profile...



Just the crests (or just the roots) on both profiles...



...or any combination thereof!

**Distributed By:**



**Developed By:**

**VISIONx Inc.**  
210 Brunswick  
Pointe-Claire, QC  
Canada H9R 1A6

Tel: (514) 694-9290  
Fax: (514) 694-9488  
Email: [info@visionxinc.com](mailto:info@visionxinc.com)  
Web: [www.visionxinc.com](http://www.visionxinc.com)