



High-Accuracy Field-Of-View Inspection & Measurement Systems (PATENTED & OTHER PATENTS PENDING)

VisionGauge® High-Accuracy Field-Of-View Inspection & Measurement Systems are powerful, flexible and extremely easy to use. They can be applied to solve a wide range of applications across many different industries.



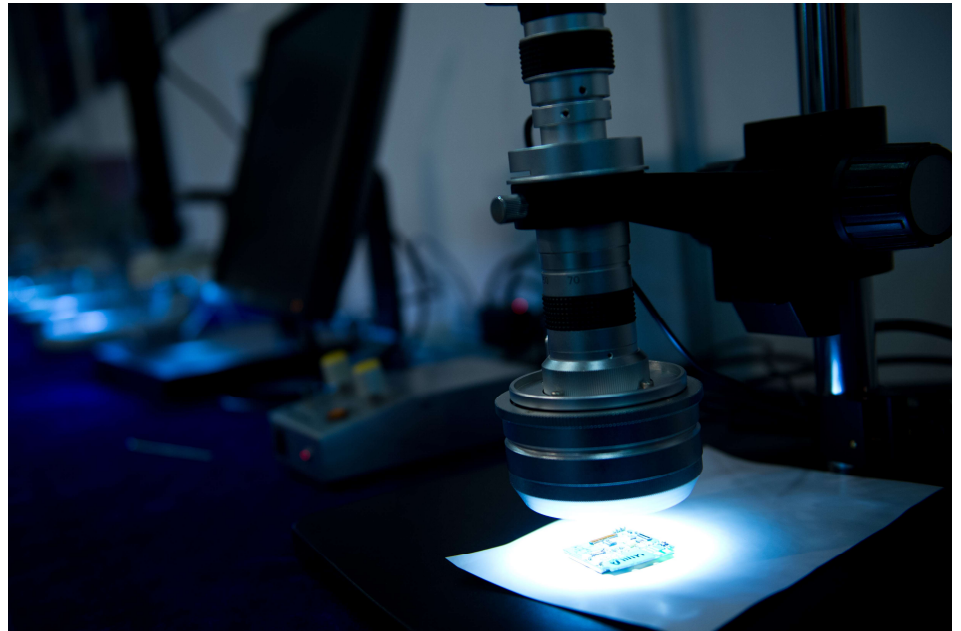
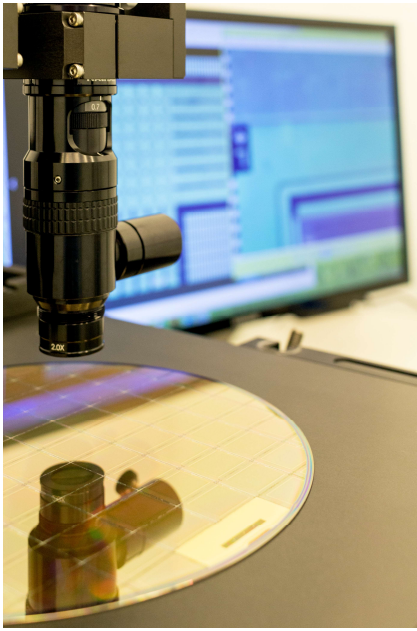
VisionGauge® High Accuracy Field-Of-View Inspection & Measurement Systems are available with either turret-based microscope type optics or with detented zoom optics. All of our industrial systems have a long working distance to provide ample clearance between the part & the lens.

All our VisionGauge® High Accuracy Field-Of-View Inspection & Measurement Systems run the VisionGauge® software package:

- Powerful and easy-to-use
- Includes all of VisionGauge®'s advance patented tools & technologies (for high-accuracy automated part-to-CAD comparison, operator-independent results, etc...)
- Includes a wide range of powerful inspection and sub-pixel accurate measurement tools
- VisionGauge® software allows for easy data collection, statistics (with graphs & charts), reporting as well as data transmission & exchange
- Supervisor-level / operator-level password protection
- Robust & field-proven, with a broad installed base (over 3500 licenses in use worldwide)

These network-ready Windows™-based systems are appropriate for both the shop floor and the QC lab.



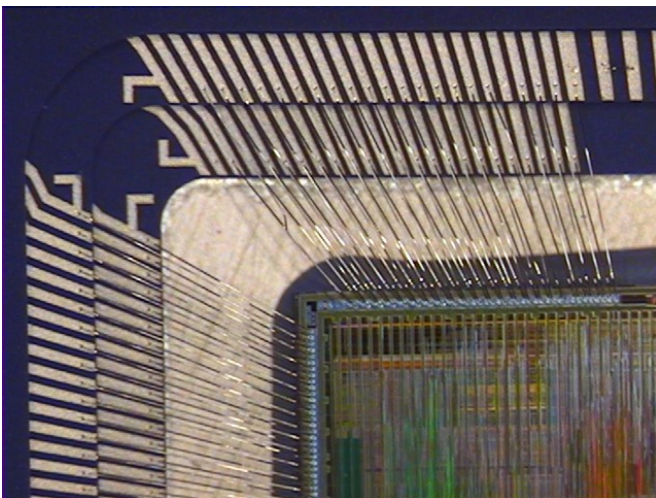


VisionGauge® High Accuracy Field-Of-View Inspection & Measurement Systems are perfect for wide range of industrial production, quality control, and laboratory applications.

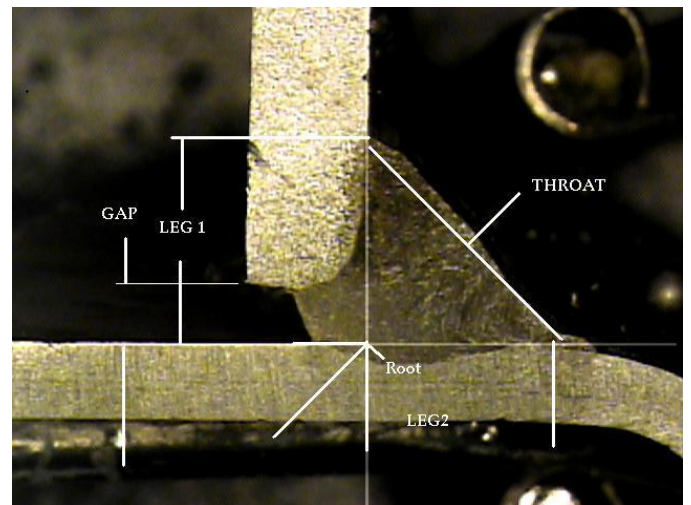
VisionGauge®'s advanced edge-detection technology produces sub-pixel accurate measurements, increases measurement repeatability, and eliminates operator-dependent measurement error. Standard configurations are available off-the-shelf and non-standard configurations can also be accommodated. We can configure a system to meet your specific requirements!

These inspection & measurement systems are built around the powerful and easy-to-use VisionGauge® software package, which means that they have a simple and intuitive Windows™ interface and include a wide range of fully-integrated tools for imaging, measurements, statistics, databasing, reporting (with charts & graphs), data transmission & exchange and much, much more!

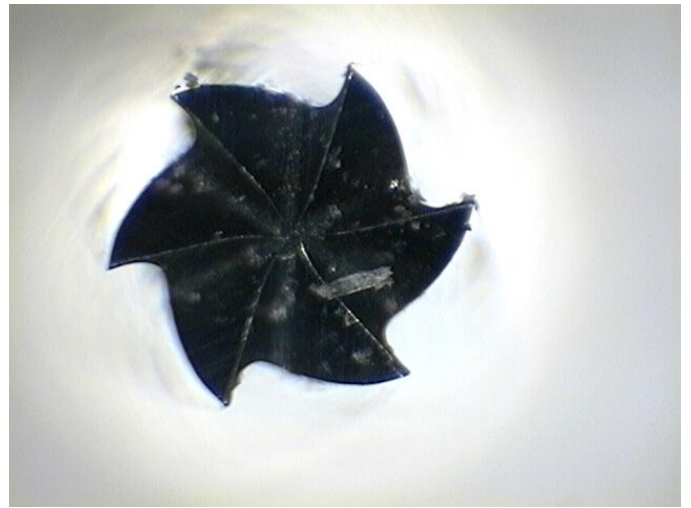
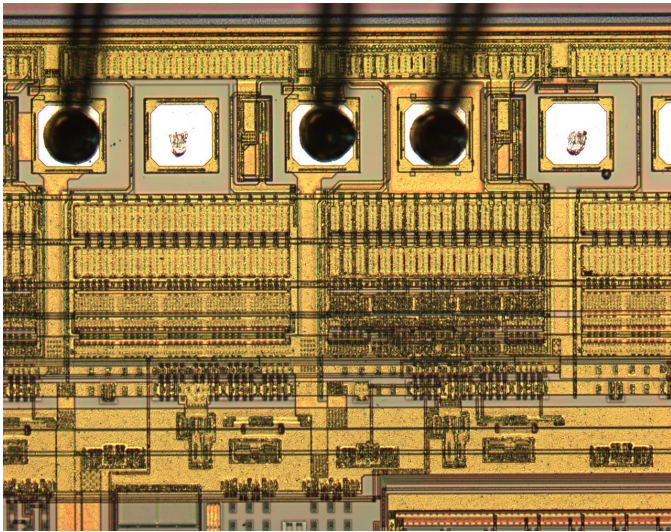
VisionGauge® 3D inspection & measurement systems also include a wide range of image analysis and measurement tools to allow you to successfully solve a wide range of applications. VisionGauge®'s powerful stage-based vision inspection tools include counting and sizing (blob analysis), registration and alignment, measurement, pattern matching, illumination control, color verification, defect detection, and many others.



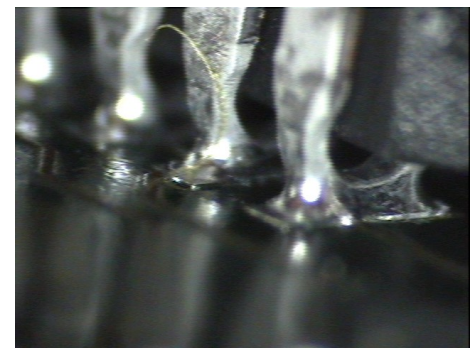
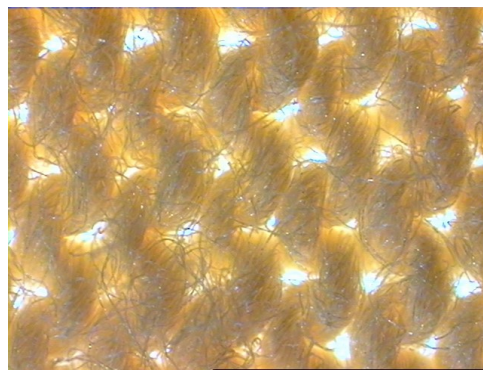
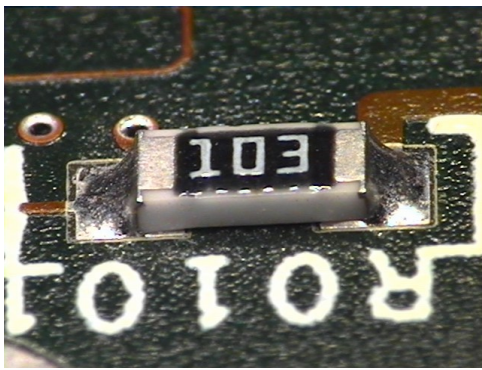
Wire Bonding



Weld Measurement

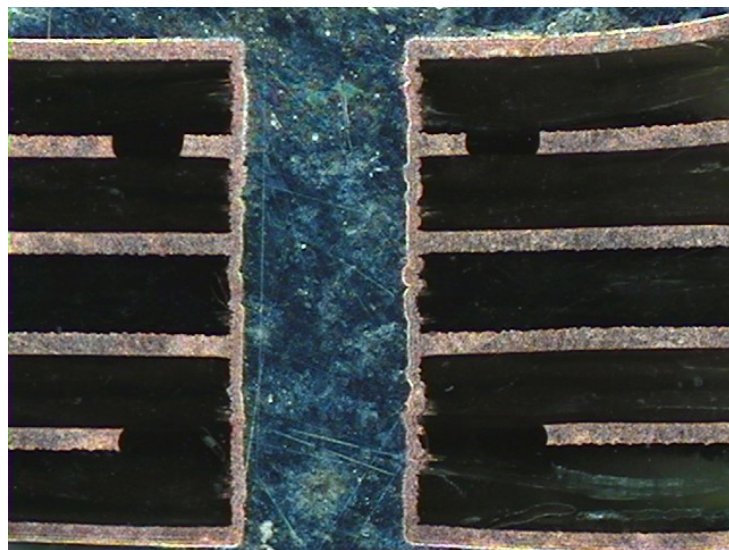


Tools, Drills, Etc...

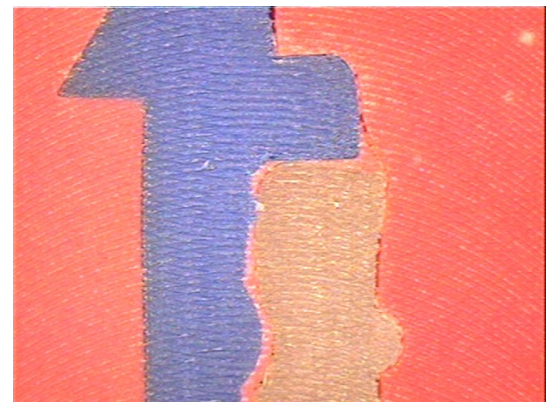


Surface Mount Components

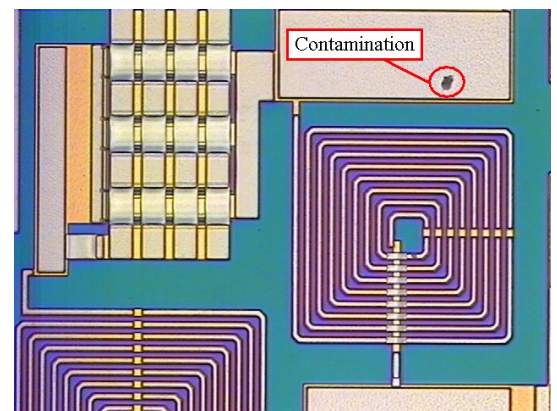
Electronic Assemblies



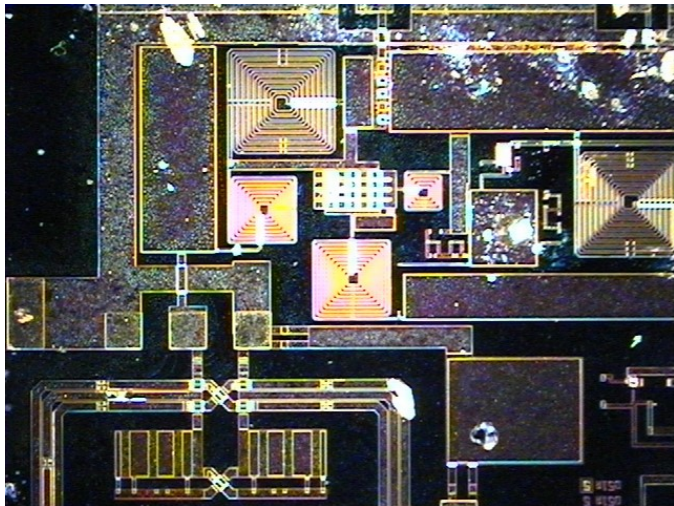
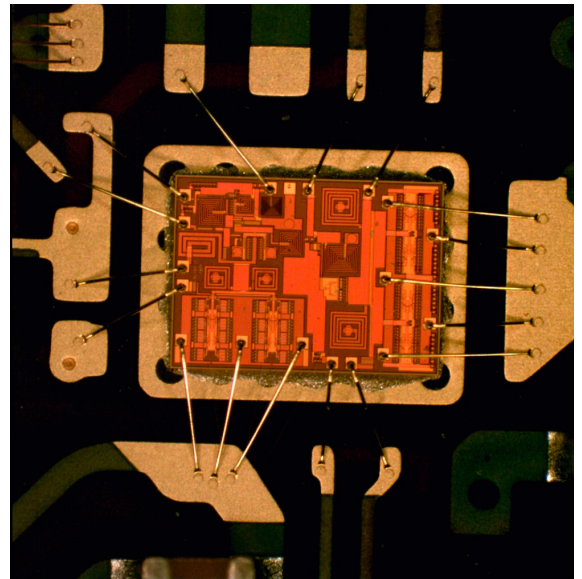
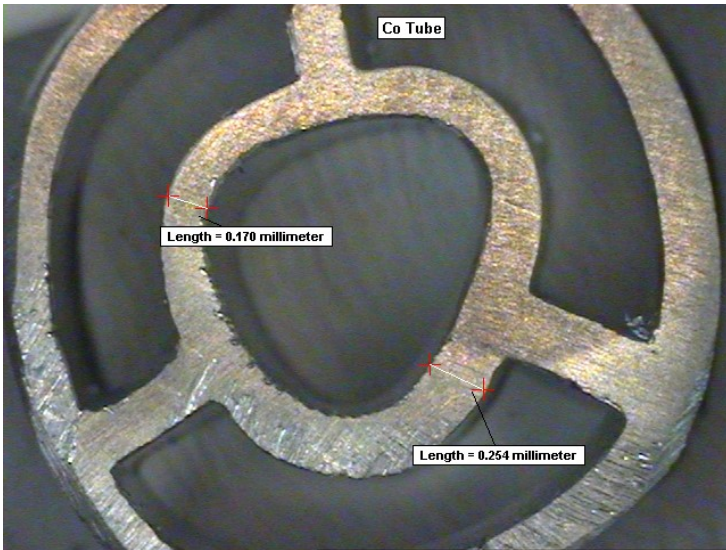
Printed Circuit Boards



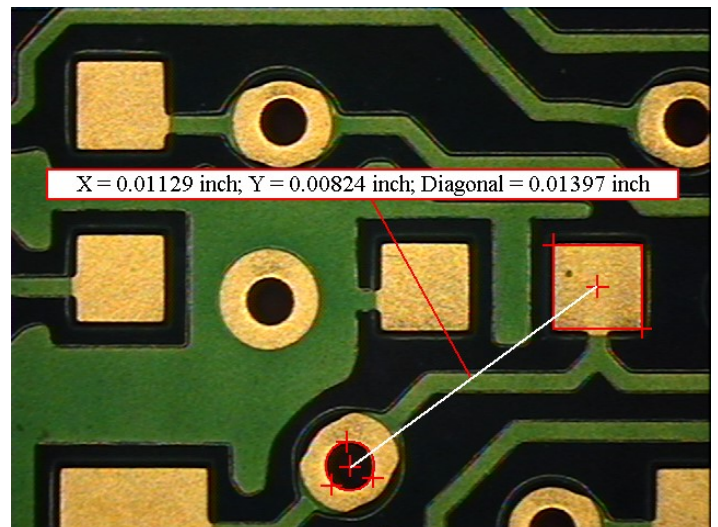
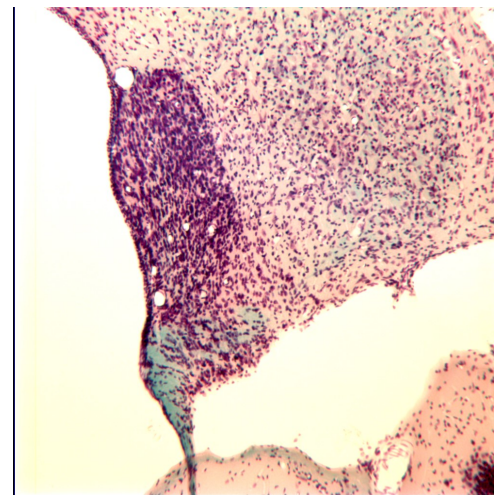
Extrusions



Semiconductor



Brightfield / Darkfield



Printed Circuit Boards

Distributed By:



Developed By:

VISIONx Inc.
 210 Brunswick
 Pointe-Claire, QC
 Canada H9R 1A6

Tel: (514) 694-9290
 Fax: (514) 694-9488
 Email: info@visionxinc.com
 Web: www.visionxinc.com