
VisionGauge[®] Digital Optical Comparator

DXF Correspondence File Setup

(i.e. setup instructions to automatically load .dxf
CAD overlays using the barcode reader)

Version 1.3 - October 25, 2022

VISIONx INC.

Computer-based visual inspection and high-precision measurement systems

Web: www.visionxinc.com

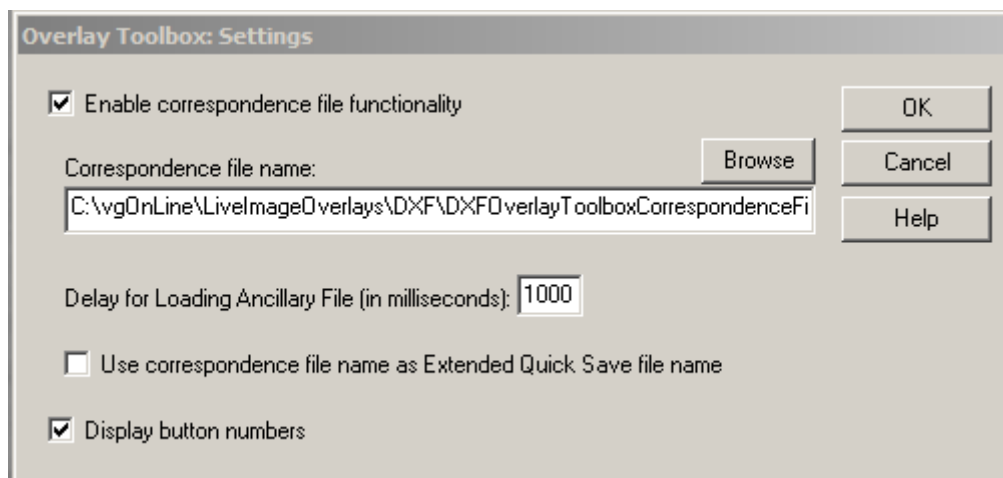
Tel: (514) 694-9290

Fax: (514) 694-9488

The *DXF Correspondence File* enables quick loading of a DXF file into VisionGauge® OnLine and any additional documents (Adobe Readers .pdf files, Microsoft Word .doc files, Microsoft Excel .xls files, etc.) that should be loaded at the same time. You can even open a VisionGauge® OnLine program file (.prg file) into the Program Toolbox automatically when a specific DXF file is loaded. By associating the data read from a barcode to a single DXF file in the VisionGauge® OnLine DXF Correspondence File, system users will be able to simply scan a barcode containing the information for the DXF CAD file, and the CAD file, along with auxiliary documents, will load automatically.

Additionally, you can also select a Measurement Toolbox to load at the same time, and you can load files to populate all String/Numerical Variables – or even set up to two unique String/Numerical Variables.

The DXF Correspondence File functionality is found in VisionGauge® OnLine’s *Tools – Overlay Toolbox – Settings – Overlay Toolbox Settings...* submenu.



Check the “*Enable correspondence file functionality*“ checkbox to allow you to choose a correspondence file name. You need to create or modify an existing correspondence .txt file in Notepad and indicate where this correspondence file can be found. Use the “Browse” button to navigate to the correspondence file or type in the path. VisionGauge® Online does allow you to store the correspondence file and associated .DXF files across networks.

Format of the DXF Correspondence File:

The DXF Correspondence File should be a .txt format file. The default program for opening .txt files is Notepad. Data of each line of the file should be comma-separated. Each line of the file should contain the data for 1 DXF file in the following order, separated by a single comma in between each item and concluding the line with a carriage return:

- *Barcode Data*
- *DXF CAD file path (.dxf format file) or "NONE"*
- *File path of an additional document to load (will use Windows default file settings for opening the file based on the extension). or the full directory path to a VisionGauge OnLine program to load or "NONE". [optional] ****Please note, that the file path cannot have spaces.***
- *Additional document's top left X-position (in pixels) [optional or 0 if the additional file is "NONE"]*
- *Additional document's top left Y-position (in pixels) [optional or 0 if the additional file is "NONE"]*
- *Additional document's window width (in pixels) [optional or 0 if the additional file is "NONE"]*
- *Additional document's window height (in pixels) [optional or 0 if the additional file is "NONE"]*
- *The file path to a Measurement Toolbox (.mtb) file to load or "NONE" [optional]*
- *Variable Data #1 = The file path to a String Variables file saved from VisionGauge® OnLine, or a string of characters to load a single Numerical or String Variable following the options below*, or "NONE". [optional]*
- *Variable Data #2 = The file path to a Numerical Variables file saved from VisionGauge® OnLine, or a string of characters to load a single Numerical or String Variable following the options below*, or "NONE". [optional]*

*String/Numerical Variables Options**

Files that contain entire sets of String or Numerical Variables can be saved from VisionGauge® OnLine in their respective menu options (e.g. the current String Variables set can be saved from the Variables - String Variables menu, File - Save as option). These file paths can be included in the correspondence file to load all variables saved in that file. These file paths can contain spaces.

Alternatively, you may specify a unique String or Numerical Variable to load in a correspondence file line with the following information:

Specify a unique String Variable to load with the string

S#XX"StringData"

where *S* indicates a String Variable. Replace *XX* with the two-digit variable number you want to update (valid numbers are 01-20). Replace "StringData" with the text string you want to send to this String Variable (in quotes, up to 255 characters).

Specify a unique Numerical Variable to load with the string

N#XX"Y.YYY"

where *S* indicates a String Variable. Replace *XX* with the two-digit variable number you want to update (valid numbers are 01-20). Replace "Y.YYY" with the number (real or integer) you want to send to this Numerical Variable (in quotes).

Valid Examples of Loading String and Numerical Variables are:

S#02"String Data #2"

N#13"1.12345"

C:\vgOnLine\misc\NumVars Set1.txt

NONE

Examples of the contents of a DXF Correspondence File are below:

```
33, C:\LiveImageOverlays\CadFile-01.dxf, C:\CSN_instrucs.pdf, 20, 20, 500, 500
35, C:\LiveImageOverlays\CadFile-02.dxf, C:\DXF_report.xls, 20, 20, 500, 500
1055, C:\LiveImageOverlays\CadFile-03.dxf
50664, C:\LiveImageOverlays\CadFile-04.dxf, C:\VgOnLine\Programs\AutoInspectionPgm4.prg
24, C:\LiveImageOverlays\CadFile-05.dxf, NONE, 0,0,0,0, C:\VgOnline\Setups\Toolbox1.mtb
854, C:\LiveImageOverlays\CadFile-06.dxf, NONE, 0,0,0,0, NONE,
C:\vgOnLine\misc\StringVars.txt, C:\vgOnLine\misc\NumVars.txt
855, C:\LiveImageOverlays\CadFile-07.dxf, NONE, 0,0,0,0, C:\VgOnline\Setups\Meas TB2.mtb,
S#02"StringData 2", N#04"1.2345"
```

Once the DXF Correspondence file is properly created and loaded into VisionGauge® OnLine, operators will be able to left-click the mouse in the Quick Load input box of the Overlay Toolbox, then scan the barcode associated with the .dxf CAD file that they would like to read-in.

Note 1: Automatically Loading a Program Along with a CAD File

To automatically load a program into the Program Toolbox along with a DXF format CAD file, simply include the program drive, path and file name as *Item 3*. (the "*File path of an additional document to load*") in the above bullet points. Stated differently: if the above "*File path of an additional document to load*" has a *.prg extension, then the VisionGauge® Online software will consider that this is a program file that should be read into the Program Toolbox.

Note 2: Specifying a "NONE" CAD File

Item 2. in the above "Format of the DXF Correspondence File" (i.e. "*DXF CAD file path (.dxf format file)*") can be "NONE" (either uppercase or lowercase). In this case, no CAD file will be read in. This is typically done when you want to use the barcode reader to automatically load a program (without reading in a CAD file).

Below is an example of reading a barcode with data "57" to load a VisionGauge® OnLine program (without reading in a CAD overlay):

```
57, NONE, C:\VGOnLine\Current\Programs\TEST.prg
```

Technical Support:

For technical support, please contact:

Tel: 514-694-9290 (ext 620)
Email: support@visionxinc.com