

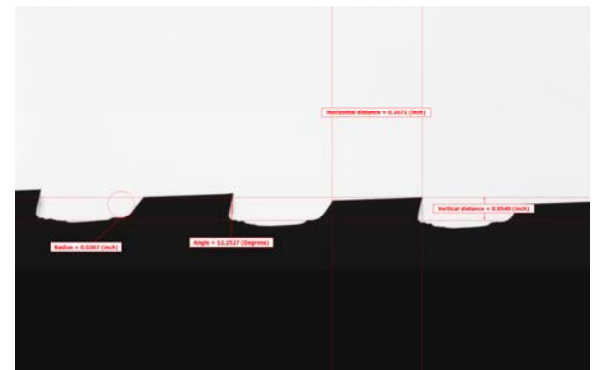
*The Fastest, Easiest, Most Accurate Way to Compare a Part to a CAD File™*

## THE PERFECT SOLUTION FOR CHECKING BROACH CUTTERS!

The VisionGauge® Digital Optical Comparator is used by manufacturers to check broach cutters:

- Quickly check 100% of your production, directly on the shop floor!
- Eliminate operator subjectivity!
- Much faster & much more accurate than traditional approaches.
- Because the system doesn't require any programming, it is extremely fast and well adapted for quick part changeover
- The system is appropriate for both small & large parts. You can check parts across the entire stage travel so that even large parts can be checked at high magnification, with very fine resolution.
- With its extended optical depth-of-field and Auto-Focus tool, the system is perfectly suited to deal with the challenges of precision broach cutter inspection.
- Advanced patented & patent-pending technology!
- Automatically measure and display deviations from nominal and quickly identify out-of-tolerance areas.
- Automatically collect measurements, statistics, images and other data for complete documentation & reporting.
- The VisionGauge® Digital Optical Comparator is a drop-in replacement for traditional optical comparators.
- The system has a broad set of measurement tools to quickly, easily and very accurately carry out all required verifications.

The VisionGauge® Digital Optical Comparator is the new standard for inspecting all kinds of precision broach cutters.



Automatically compare the part to its CAD file and carry out a wide range of high-accuracy measurements



- Fast!
- Accurate!
- Easy to operate!

Much higher accuracy, directly on the shop floor!

Accurately check a wide range of broach cutters

# VisionGauge® Digital Optical Comparator 500 Series - Principal Specifications

|  |   |
|--|---|
| Available configurations   | Both horizontal and vertical  |
| Standard optical magnifications (equivalent to traditional comparators)  | 5X, 10X, 20X, 50X and 100X <sup>1</sup>   |
| Image viewing area (diagonal)  | 38"   |
| Motorized X, Y & Z axes  | Yes   |
| X, Y & Z stage movement  | High-accuracy crossed-roller movement   |
| Auto-Focus   | Yes   |
| X & Y axis encoder resolution  | 0.25 micron <sup>2</sup>  |
| LASER module (for Z-axis measurement)  | Optional  |
| High-accuracy rotary axes  | Optional  |
| Extended stage travels   | Optional (along all 3 axes)   |
| External 3-axis, 3-speed joystick to control the stage   | Yes   |
| Illumination   | <ul style="list-style-type: none"> <li>• LED-based (for very stable illumination conditions, with a very long life)</li> <li>• Programmable and computer-controlled (for repeatable illumination conditions)</li> <li>• Both reflected (i.e. front) and transmitted (i.e. back) illumination modules are available</li> </ul> |
| Lens   | Very low distortion telecentric, with long working distance and extended depth-of-field   |
| Real-time mathematical image processing, enhancement and correction  | Yes   |
| Multi-monitor display  | Yes <sup>3</sup>  |
| Overall monitor size   | 35" (wide) x 27" (high)   |
| Patented CAD Auto Pass / Fail™ (to automatically determine, to very high accuracy, if the part matches the CAD data, with no operator-to-operator variation) | Yes, with user-selectable bi-directional tolerances   |
| Patented CAD Auto-Align™ (for fast, operator-independent alignment of the CAD to the part along one or multiple datums or through an overall "best-fit")     | Yes: automatically align the CAD data to the part (either XY or XY & Rotation alignment) along an arbitrary number of user-specified datums.  |
| Extended set of high-accuracy measurement tools  | Yes   |
| Sub-pixel accurate edge detection  | Yes   |
| Quickly carry out on-screen measurements using either the mouse or joystick  | Yes   |
| Joysticks  | 3-axis, 3-speed industrial grade  |
| Image annotation tools   | Yes   |
| Quickly and easily save images of parts, either with or without the CAD overlay, and either with or without measurements as well as time & date information  | Yes   |
| Built-in SPC capabilities, with automatic numerical charts & PASS / FAIL graphs  | Yes   |
| Automatic data export to Excel™  | Yes   |
| Automatic data export to other applications  | Yes (through Windows™ DDE or other mechanisms)  |
| Built-in Dynamic Data Exchange (DDE) support   | Yes   |
| Easy file data import & export   | Yes   |
| Supervisor-level / operator-level password protection  | Yes   |
| Operating System   | Windows™ 10 <sup>4</sup>  |
| Built-in "F1 Help"   | Yes   |
| Fan & filter unit on main cabinet  | Yes (to create a positive pressure and keep dust out)   |
| Power requirements   | Either 110V or 220V, 15 Amp (single cord)   |
| CE Markings  | Available upon request  |
| Operating temperature  | 10 °C - 35 °C   |
| Clear and easy-to-use documentation (both printed and electronic "pdf" format)   | Yes   |
| Support (by phone, fax & email)  | Included for a full year  |
| Warranty   | 1 year (complete)   |

<sup>1</sup> Available in both single magnification and multi-mag configurations. Other optical magnifications available on request.

<sup>2</sup> Other encoder resolutions available on request.

<sup>3</sup> Basic system configuration includes a quad-high-resolution-monitor display that allows real-time viewing of the live video image in full 1:1 resolution.

<sup>4</sup> Other operating systems available on request.

## Distributed By:



## Developed By:

**VISIONx Inc.**  
 210 Brunswick  
 Pointe-Claire, QC  
 Canada H9R 1A6

Tel: (514) 694-9290  
 Fax: (514) 694-9488  
 Email: info@visionxinc.com  
 Web: www.visionxinc.com